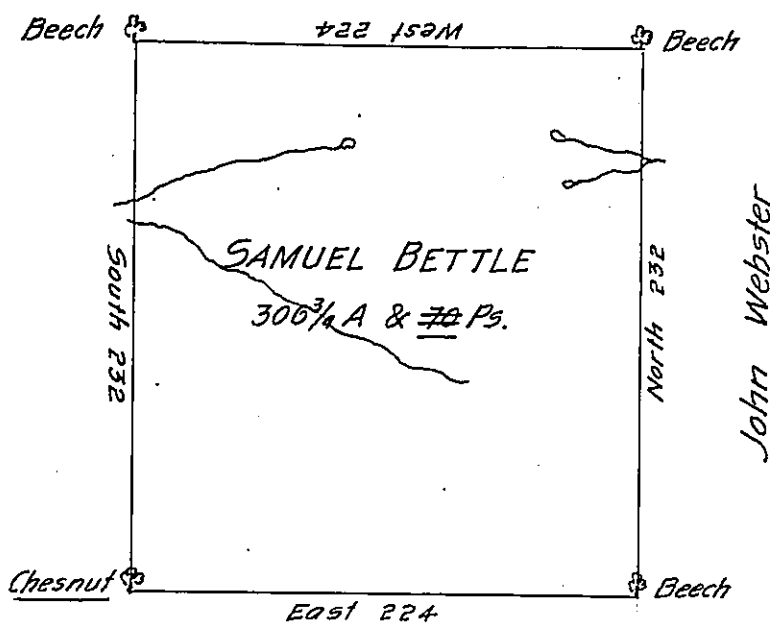


John Eldridge
172-053



Thomas Marriott

A Draught of a Tract of Land Situated in Bedford County adjoining
 land of Thomas Marriott and others Containing Three hundred and
 Six acres & 70 Ps. Surveyed the 21st day of October 1785 in Pursuance of a
 Warrant dated the 30th day of July 1776.

George Woods D.S.

John Lukens Esq. S.G.

Wt No 72

IN TESTIMONY that the above is a copy of the original remaining on file in
 the Department of Internal Affairs of Pennsylvania, made
 conformably to an Act of Assembly approved the 16th day of
 February, 1833, I have hereunto set my Hand and caused
 the Seal of said Department to be affixed at Harrisburg,
 this fourteenth day of March 1904.

Francis D. Brown
 Secretary of Internal Affairs.